

Installation Instructions

Wireless Motion Sensor LED Mini Spotlight

MB300/310

Thank you for purchasing the Mr. Beams™ Wireless Mini Spotlight. We are committed to eliminating darkness using the latest in Light-Emitting Diodes (LEDs). LEDs are the most efficient and durable light sources available. We are certain that your light will contribute to a safer environment and provide light where you need it at a very reasonable cost.

What is included per light:

- 1 Wireless Spotlight
- 1 Mounting Bracket
- 2 Screws
- 2 Anchors

What you need to install per light:

- 1 Small Screwdriver
- 3 C-Cell Alkaline Batteries

Spotlight Features:

Motion/Light Sensor: Light instantly turns on when it detects motion from up to 25 feet away. The light sensor conserves battery life by preventing the light from activating in daylight.

Auto Shut-off: Light shuts off automatically after 30 seconds if no motion is detected.

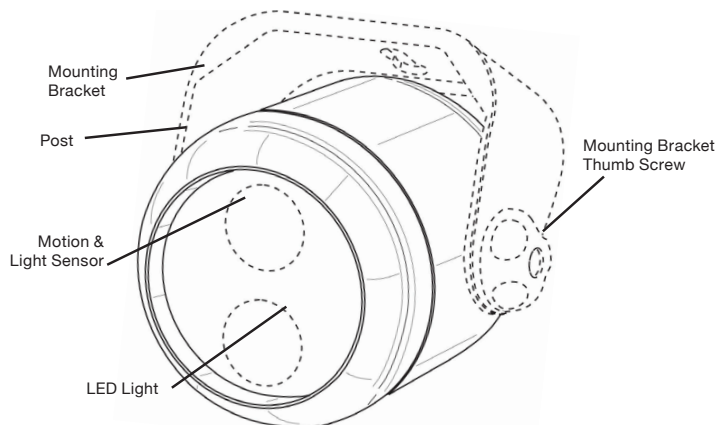
Adjustable: Bracket allows light to angle up or down.

Bright LED: 80 lumens covers up to 350 sq ft.

Durable, Weather Resistant: Tight seals and UV resistant material allow the light to work in all weather conditions.

Tips:

- For best results, use type Alkaline C-Cell batteries with 1.5V rating
 - Install only new batteries of the same type in your product
 - Failure to insert batteries in the correct polarity, as indicated in the battery compartment, may shorten the life of the batteries or cause batteries to leak
 - **Do not mix old and new batteries**
 - **Do not mix Alkaline, Standard (Carbon-Zinc) or Rechargeable (Nickel Cadmium) or (Nickel Metal Hydride) batteries**
 - **Do not dispose of batteries in fire**
 - **Batteries should be recycled or disposed of as per state and local guidelines**
 - **Light may activate when batteries are first inserted. Simply take light into dark room**
- Allow batteries to settle, then test activation**

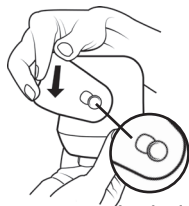


NOTE: Light sensor only allows Spotlight to activate in darkness. We recommend you test in a dark room or closet.

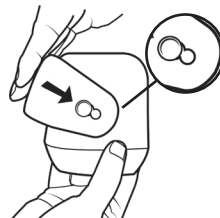
Set Up



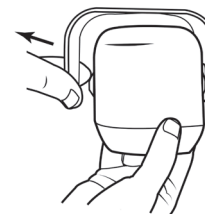
1. Unscrew thumbscrew on mounting bracket by turning counter-clockwise and set aside.



2. Tilt bracket back slightly.

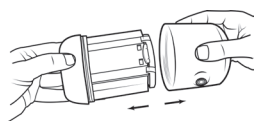


3. Push bracket down toward light to unlock from keyhole.



4. Gently pull up on post side of bracket and lift off of light.

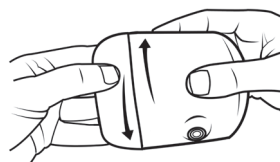
Install/Change Batteries



5. Remove front cover of spotlight by unscrewing counter-clockwise. Pull face from cup to reveal battery holder.

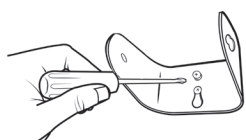


6. Push down on battery door tab to release. Insert 3 C-Cell batteries, with flat side to spring. Attach battery door by inserting tabs into the rectangular holes then push down on front until door clicks into place.

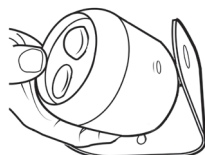


7. Screw face of spotlight back into the cup by turning clockwise 3 full rotations until tightly closed.

Mounting Spotlight

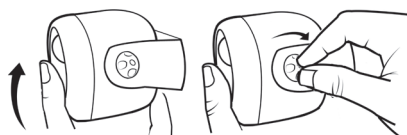


8. Determine mounting location and drive two screws directly through two holes in mounting bracket.



9. First, slide the post into bracket, then slide down to **locked** position.

10. Align opposite end with screw to the hole.



11. Choose preferred angle of light, then tighten thumbscrew to lock in position.

* Visit our website to view installation video.

* 1 year limited warranty. See enclosed card for details.

MR BEAMS™
Surprisingly **Bright Light** Anywhere
www.mrbeams.com



32333 Aurora Rd. Suite 100 Solon, OH 44139
877.298.9082