

# Installation Instructions

## Wireless Motion Sensor LED Path Light

### MB572

**Thank you** for purchasing the Mr. Beams™ Path Light. We are committed to eliminating darkness using the latest in Light-Emitting Diodes (LEDs). LEDs are the most efficient and durable light sources available. We are certain that your light will contribute to a safer environment and provide light where you need it at a very reasonable cost.

#### What is included per light:

- 2 Motion Sensor Path Lights
- 4 Screws & 4 Anchors
- 2 Stakes & 2 Brackets

#### What you need to install:

- 1 Small Screwdriver
- 3 C-Cell Alkaline Batteries (per light)

#### Path Light Features:

**Motion/Light Sensor:** The Path Light instantly turns on when it detects motion from up to 15 feet away. The light sensor conserves battery life by preventing the light from activating in daylight.

**Auto Shut-off:** Path Light shuts off automatically after 20 or 60 seconds (optional) if no motion is detected.

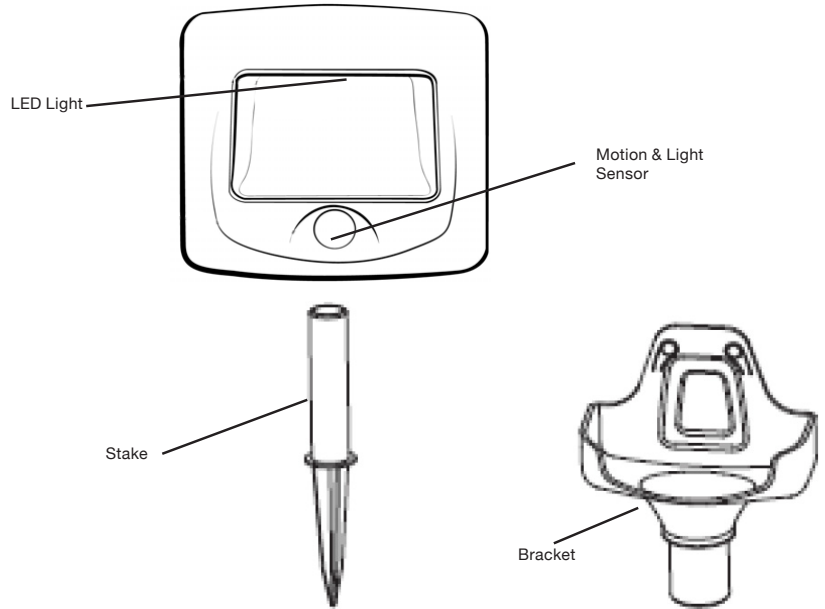
**Bright LED:** 20 Lumens covers up to 140 sq ft.

**Durable, Weather Resistant:** Tight seals and UV resistant material allow the light to work in all weather conditions.

**Glow Mode Option:** Emits soft glow when darkness is sensed for safety.

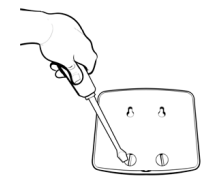
#### Tips:

- Use only new alkaline C-Cell batteries with 1.5V rating.
- Do not mix old and new batteries. If batteries are not new, it may cause the light to malfunction.
- Install batteries with polarity in correct position.
- Light may activate when batteries are inserted. Simply take light into a dark room. Allow batteries to settle, then test activation.
- **If your light will not turn off, it means that it is time to replace the batteries.**

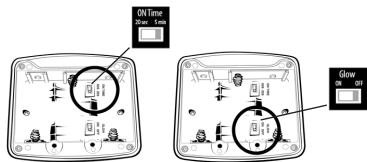


**NOTE: Light sensor only allows light to activate in darkness. We recommend you test in a dark room or closet.**

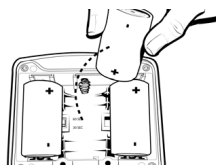
#### Mounting with Stake



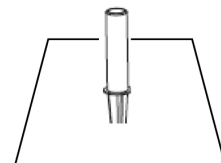
1. Remove rear cover of Path Light by removing 2 screws on back.



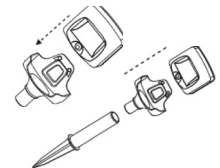
2. Set auto shut-off to 20 sec or 60 sec. Setting to 20 seconds will extend battery life.  
3. Set "GLOW" to on if you want it to glow in darkness or off for no glow. Setting to off will extend battery life.



4. Insert 3 C-Cell batteries into light. Replace cover.

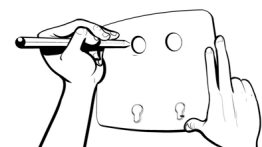


5. Insert stake into ground by twisting it and pushing it down or digging a hole.

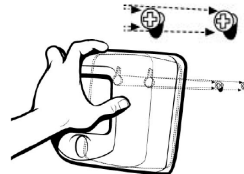


6. Insert Path Light into mounting bracket.  
7. Insert mounting bracket into stake.

#### Mounting on Wall



1. Determine location for mounting light. Flip rear cover upside down and use holes for thumb screws as template to mark two holes for anchors and/or screws (included). We recommend mounting the screws parallel to the ground if mounting on a vertical surface. Make sure that screws are precise distance from each other as defined by the distance of the thumb screw holes. Replace rear cover and thumb screws.



2. If using anchors, use 3/16" drill bit to drill holes and insert anchors. Drive screws into anchors so that screw head protrudes 1/8" from the surface. If using only screws, use 1/8" drill bit to drill holes and insert screws so that screw head protrudes 1/8" from the surface.  
3. Slide light down so screws are securely held by track.

\* Visit our website to view installation video.

\* 1 year limited warranty. See enclosed card for details.