

Installation Instructions

Spotlight Mounting Bracket

MB140Z

Mounting Bracket Uses:

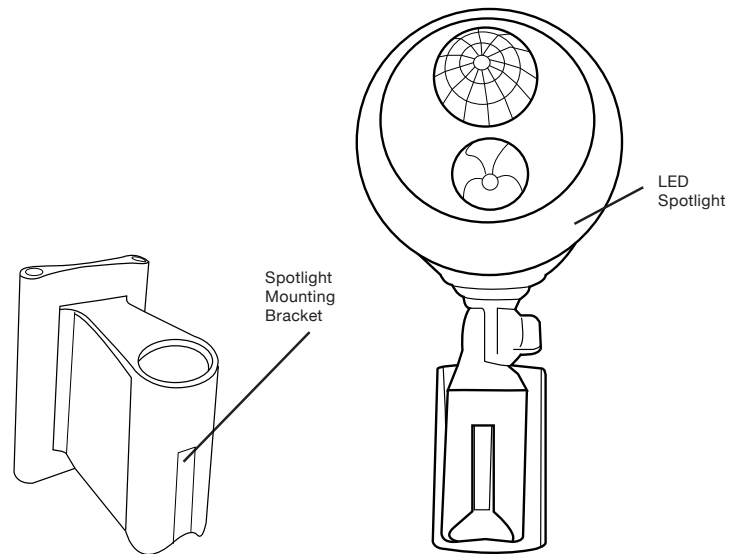
The Spotlight Mounting Bracket can be used in areas where there is no option to attach spotlight with screws. Common applications are mounting the light on drain pipes, poles or metal fences.

What is included per light:

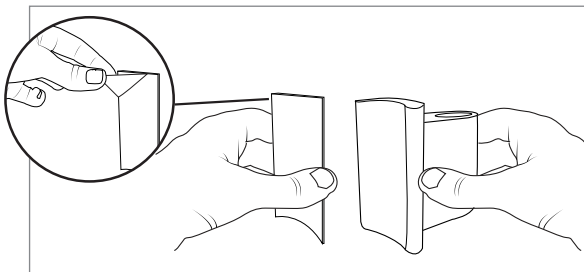
- 1 Mounting Bracket
- 1 Adhesive Grip Pad
- Zip Ties for Mounting

Works with:

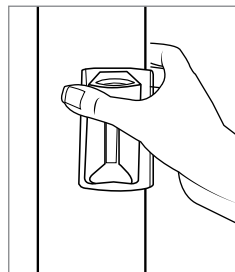
- MB330, MB360, MB370, MB371, MB380, MB390, MBN340, MBN342, MBN350 & MBN352



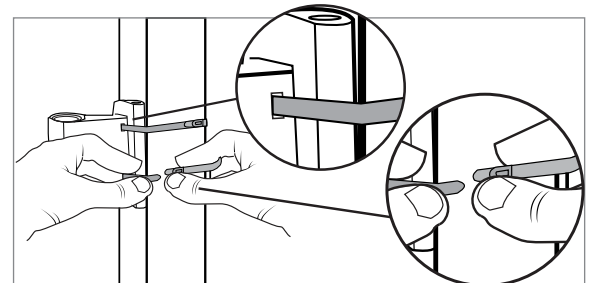
How to mount a spotlight with the bracket



1. Peel off back of the adhesive grip pad and apply to the back of the spotlight bracket.

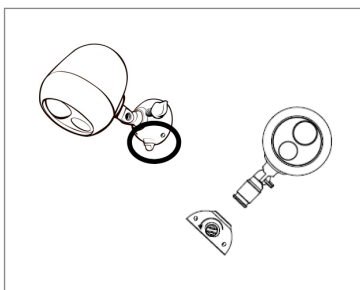


2. Determine mounting location on drain pipe. Line up the bracket with the pipe.

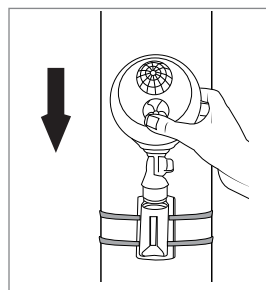


3. Slide zip ties through the holes on the bracket and wrap around the drain pipe. Make sure ties are wrapped tightly.

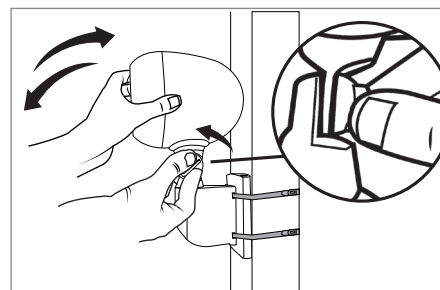
How to install the spotlight



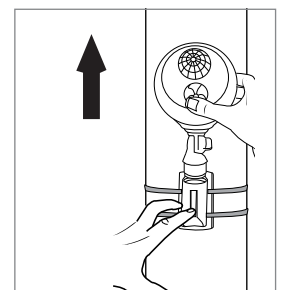
1. Remove mounting base by turning thumb screw counter clockwise. Pull mounting base off stem.



2. Line up the stem of the spotlight with the bracket and slide it into place.



3. Loosen the knuckle screw that connects the spotlight head to mounting base and adjust the spotlight head to the proper direction as shown above. Tighten the thumb screw.



4. To remove the spotlight from the bracket, push down on tab and pull the bracket off stem.